

Description

The TCS1064 uses advanced trench technology to provide excellent $R_{DS(ON)}$, low gate charge and high density cell Design for ultra low on-resistance. This device is suitable for use as a load switch or in PWM applications.

General Features

- ◆ $V_{DS} = 20V$, $I_D = 3A$
 $R_{DS(ON)}(Typ.) = 68m\Omega$ @ $V_{GS} = 2.5V$
 $R_{DS(ON)}(Typ.) = 50m\Omega$ @ $V_{GS} = 4.5V$
- ◆ High power and current handling capability
- ◆ Lead free product is acquired
- ◆ Surface mount package

Application

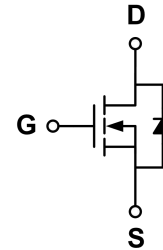
- ◆ PWM applications
- ◆ Load switch

Package

- ◆ SOT-23

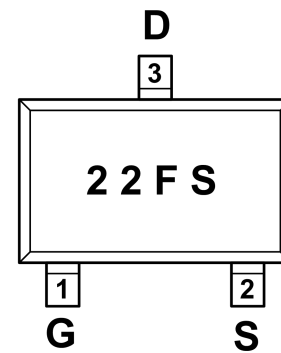


Schematic diagram



Marking and pin assignment

SOT-23
(TOP VIEW)



Ordering Information

Part Number	Storage Temperature	Package	Devices Per Reel
TCS1064-C	-55°C to +150°C	SOT-23	3000

Absolute Maximum Ratings (TA=25°C unless otherwise noted)

parameter	symbol	limit	unit
Drain-source voltage	V_{DS}	20	V
Gate-source voltage	V_{GS}	±12	V
Drain current-continuous ^a @Tj=125°C -pulse d^b	I_D	3	A
	I_{DM}	12	A
Drain-source Diode forward current	I_S	3	A
Maximum power dissipation	P_D	1.25	W
Operating junction Temperature range	T_j	-55—150	°C